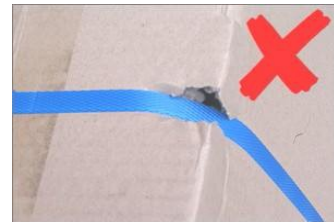


# SEMI AUTO STRAPPING MACHINE EXS-205



Strap tension controlled electronically for accuracy at low tensions, making it possible to strap soft or low quality cartons without damaging the corners

- Light weight and portable, that can be wheeled around work areas
- Low maintenance, new generation strapping head
- Strap tension controlled electronically for accuracy at low tensions
- Backed by a range of spare parts and fully trained service technicians

## SPECIFICATIONS:

<b>Strap Width:</b>	5-15mm
<b>Speed:</b>	2.5 seconds per strap
<b>Power Supply:</b>	240V, 1 phase, 10A
<b>Strap Tension Range:</b>	2-55kg
<b>Machine Dimensions:</b>	780mm(L) x 550mm(W) x 750mm(H)
<b>Weight:</b>	63kg
<b>Power Consumption:</b>	0.2Kw

# EXS-205

